

Report of the Deputy Chief Executive

CREMATION NUMBERS AND MINOR IMPROVEMENTS UPDATE1. Purpose of report

To provide the Joint Committee with the latest update on cremation numbers and minor improvements.

2. Background and Detail

At its meeting of 20 June 2019 Joint Committee noted and requested the following:

“Concern was raised that the number of cremations was lower than anticipated which created a budget shortfall. RESOLVED that a detailed report on cremation numbers and revised pricing of cremations be brought to the Joint Committee.”

A fully detailed report was presented to the October meeting of this Committee, so this report is just an update on the latest cremation numbers in comparison with the East Midlands Death rate (see appendix).

Month	2014/15	2015/16	2016/17	2017/18	2018/19	2019/20
April	249	310	262	190	228	190
May	233	229	231	230	251	230
June	206	299	246	253	198	212
July	236	233	213	200	178	196
August	234	210	201	181	201	194
September	233	219	233	198	153	175
October	261	236	212	207	191	207
November	268	237	255	221	221	210
December	298	295	257	235	196	181
January	309	261	315	298	273	
February	321	305	315	269	241	
March	323	300	263	263	217	
TOTAL	3171	3134	3003	2745	2548	

In the first nine months of 2019/20 there have been 1,795 cremations, which compares with 1,817 in 2018/19. The ratio being 98.8% compared with 2018/19 – year end prediction for 2019/20 based on this would therefore be 2517. However, the final figure could be lower. The appendix has a graph of cremation numbers.

In terms of minor improvements:

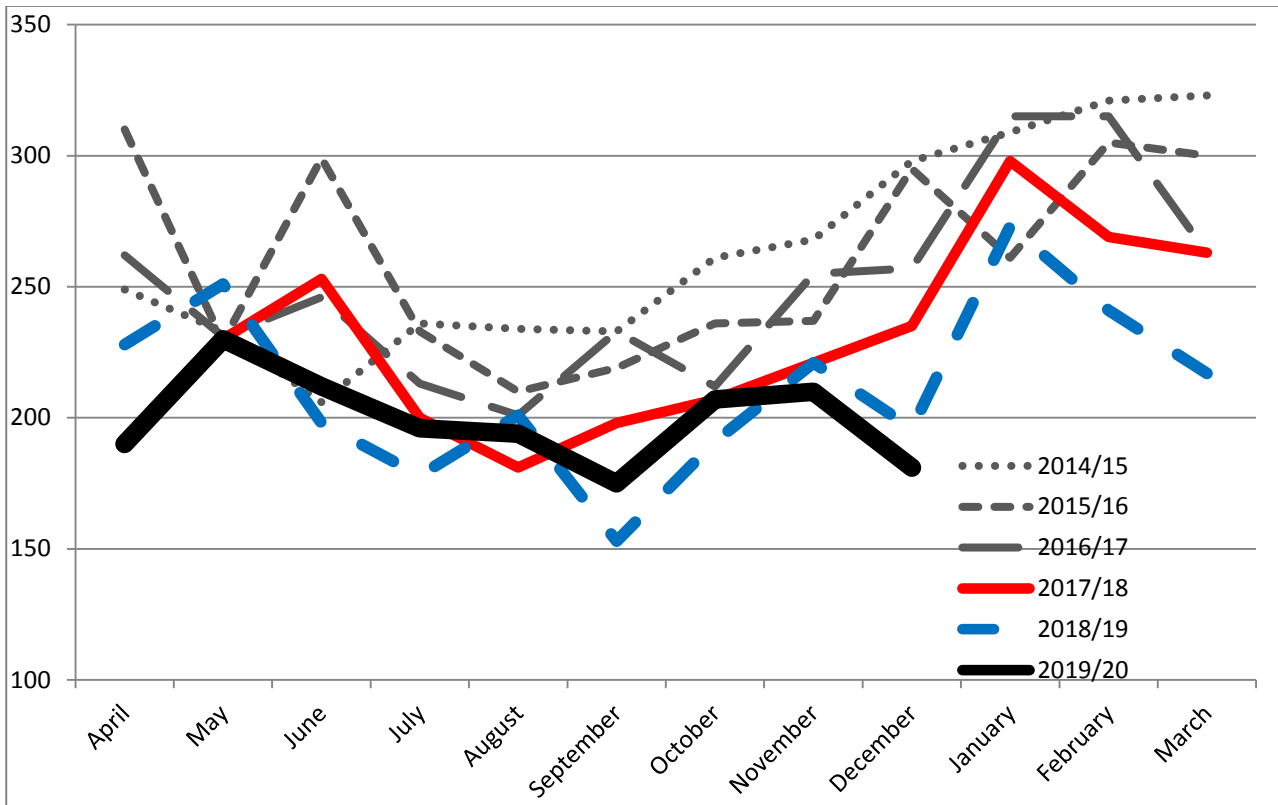
- Replacement Windows £10,000 – these have now been ordered, to be fitted end of January
- Replacement Fascia Boards £15,000 – These will be patched up and painted and only a few will be replaced, just awaiting an official quote.

Recommendation

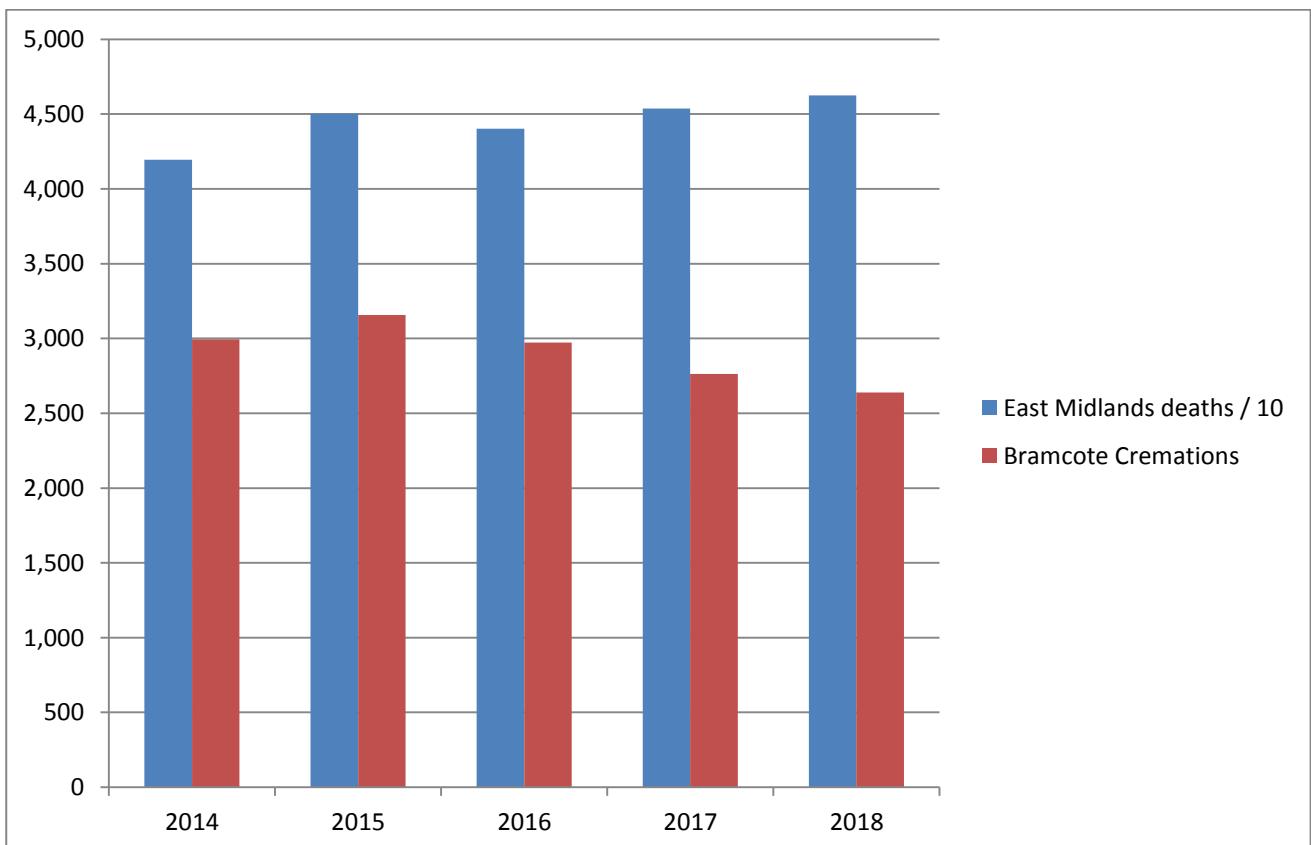
The Joint Committee is asked to NOTE the report.

Background papers Nil

Graph of Bramcote cremation numbers by month and financial year



Graph of Bramcote cremation numbers by year compared with East Midlands deaths



This graph illustrates the growing disparity over the last three years between the number of cremations at Bramcote and the East Midlands death rate.